



## CHILD PROTECTION INFORMATION FOR LSCB MEETING ON 9/6/11

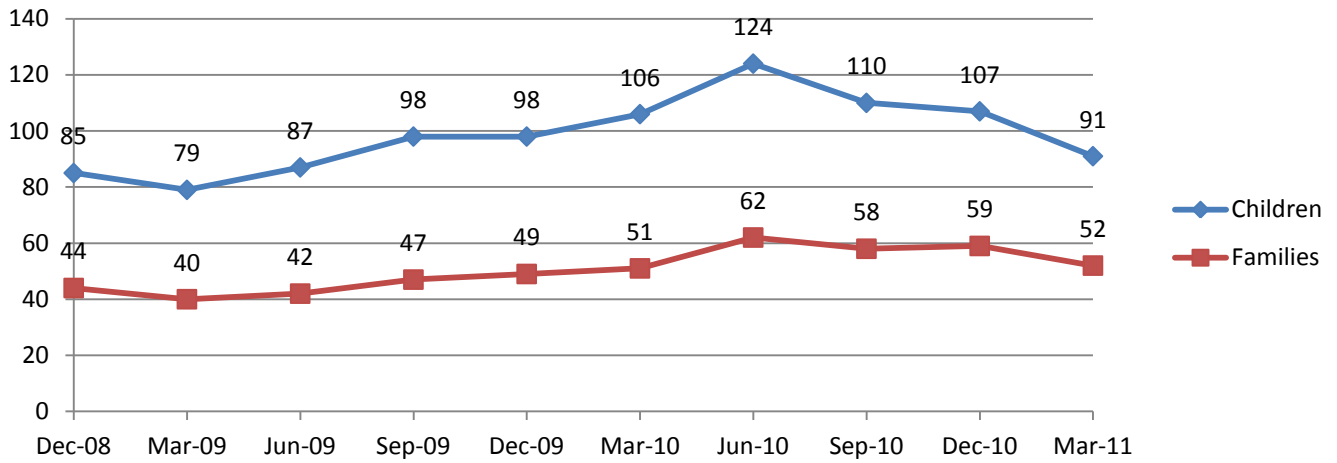
Information from 01/04/10 to 31/3/11

Children subject of Child Protection Activity from 1/4/10 -31/3/11	
No. of children subject of Section 47 enquiries that were concluded in the period.	211 children
No. of children considered at Initial Child Protection Conference (ICPC)	113 children / 71 ICPCs
No. of children made subject of child protection plans from the 71 ICPCs	97 (includes 16 unborn)
No. of children not made subject of child protection plans from the 71 ICPCs	16 children from 9 families
No. of children subject of ICPC who have previously had a CP Plan	15 from 8 families
No. of children considered at the 154 review conferences	283 from 154 families
No. of children whose CP Plan concluded	114 from 65 families
No. of review conferences held on time	97% (1 Review Conference)
How long subject of a CP Plan at 31/3/11: a) Less than 1 year b) Between 1 – 2 years c) Over 2 years	a) 71 children b) 14 children c) 6 children (2 families)
Total no. of conferences / children: a) Initial b) Review	225 / 396 a) 71 considering 113 children b) 154 considering 283 children
Parental / family members attendance at the 225 conferences:	197 conferences had at least 1 family member attend = 87%
CP Plan sent out within 48 hours to all core group members	100%
Distribution of conference minutes within 15 working days	39/225 on time (17.3%)
Children subject of a cp plan with a qualified allocated social worker	100%

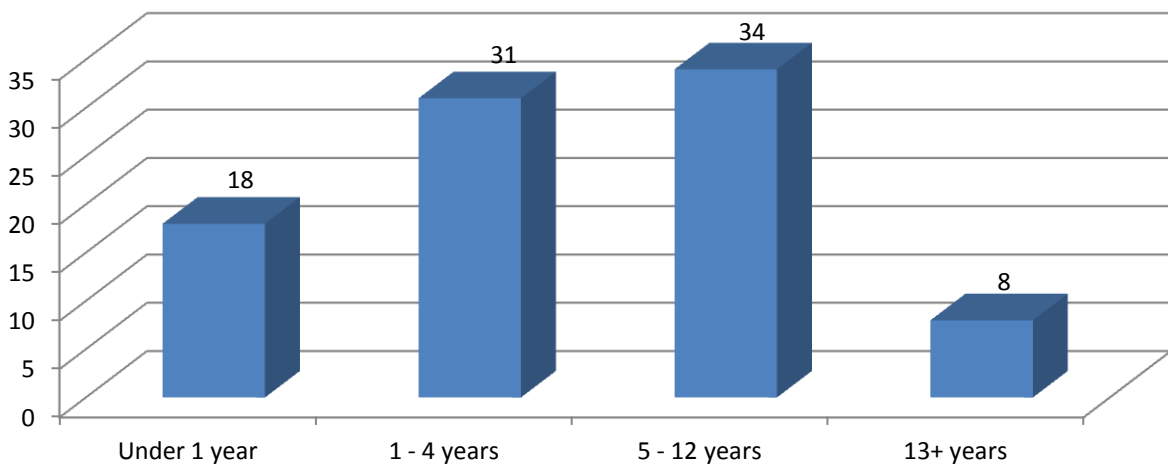
### Details of the 91 Children with Child Protection Plans as of 31/03/11

- **Genders** – 45 girls and 43 boys + 3 unborn.
- **Disability** – 7 children, 5 are boys (2 with Autistic Spectrum Disorder (ASD), 2 have global delay & incontinence and 1 has hypertonia, dyspraxia & incontinence). 2 are girls (speech & language delay and ASD/ADHD). Only one child is open to the Disabled Children's Team.

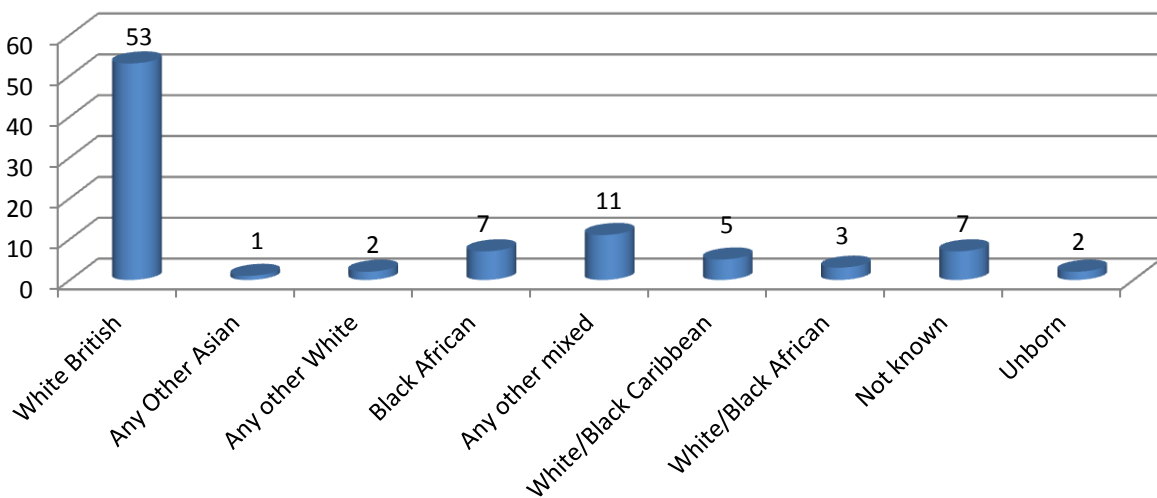
**Numbers of Children/Families subject of child protection plans, quarter ending:-**



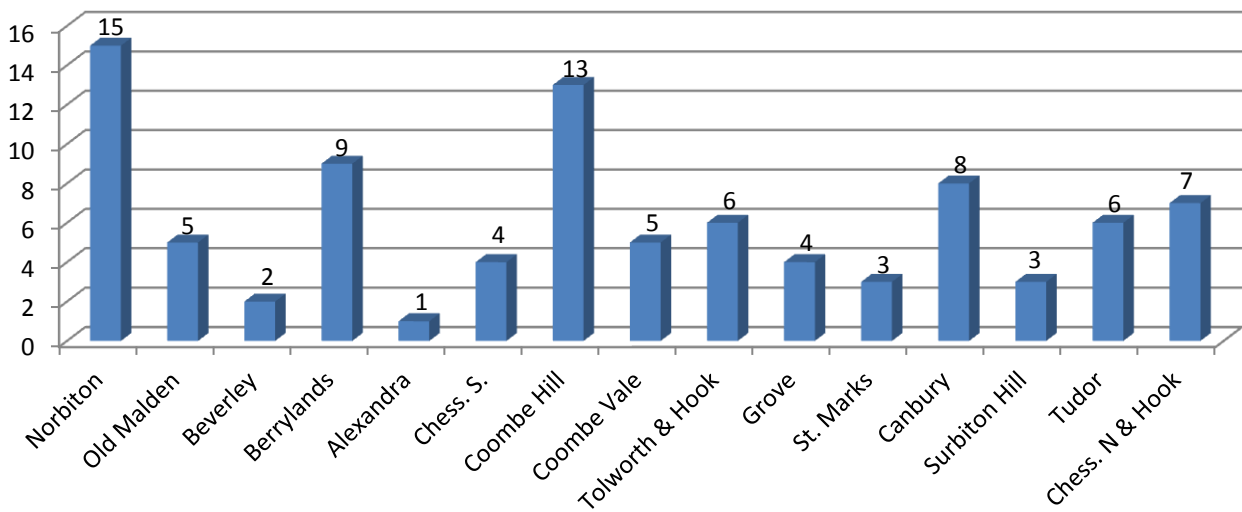
**Age spread of children subject of child protection plans as of 31/3/11**



**Ethnicity spread of children subject of child protection plans as of 31/3/11**

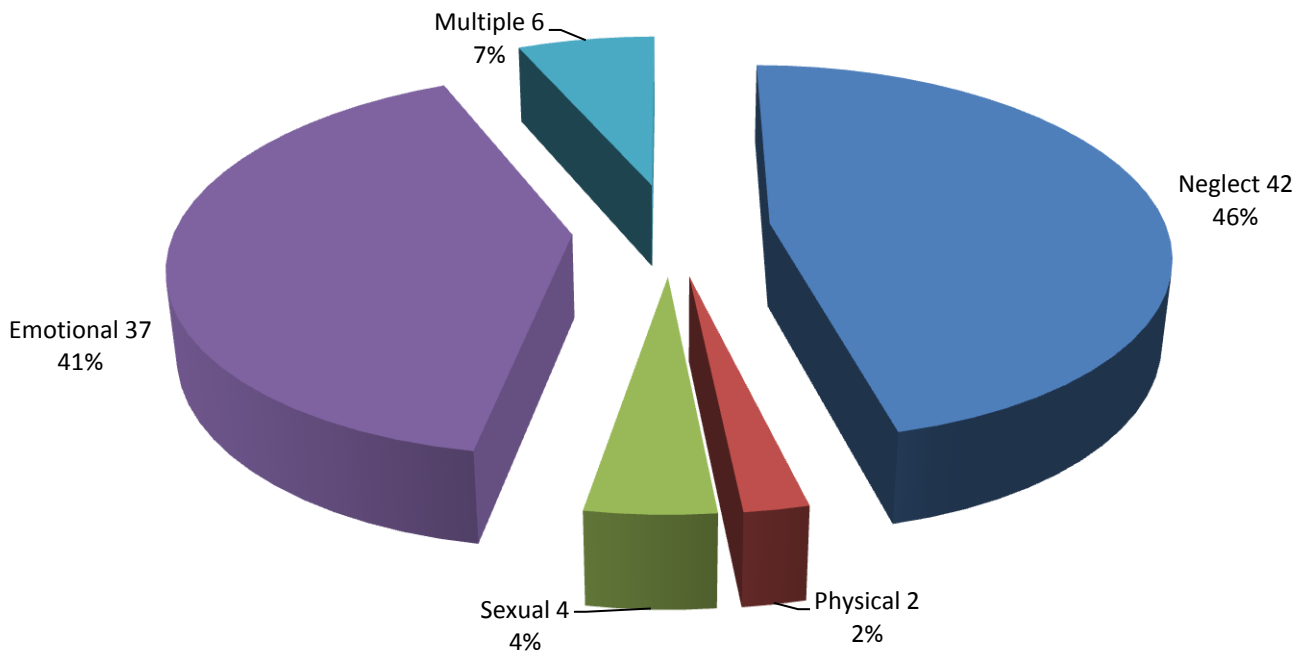


**Children made subject of child protection plans as at 31/3/11 by Ward of home address at point of initial conference**



N.B. There are no children who are subject of child protection plans from Kingston Town or St. James' ward

**Children subject of child protection plans by category of abuse as of 31/3/11**



Of the 6 children (from 2 families) with more than one category, the categories used were 'Neglect' and 'Sexual Abuse' (2 children) and 'Physical' and 'Emotional' (4 children).

<b>Significant Factors affecting the 113 Children (including 16 unborn) &amp; their Families subject of the 71 Initial CP Conferences held 01/04/10 – 31/03/11</b>	
Parent thought to have an undiagnosed mental health difficulty	4/71
Parent with a diagnosed mental health illness	15/71
Parent receiving a CMHT service	8/71
Parent receiving compulsory inpatient treatment for mental health illness.	0/71
Domestic abuse either currently or previously a factor	47/71
Injunction, bail restrictions in place, offender cautioned or in custody	9/71
Previous child removed or not in parents' care	16/71
Care proceedings actual or likely	8/71
Lone parent	27/71
Parent is / was in care and /or a care leaver	6/71
Parent previously subject of a child protection plan	3/71
Parent aged 21 or under	8/71
Child with a disability	7/71
Looked after child, either now or previously	1/71
Large families (4 plus children)	2/71
Drug misuse only	16/71
Alcohol misuse only	13/71
Both Drug & alcohol misuse	10/71
Parent receiving treatment for substance misuse	5/71
Neo natal substance misuse, actual or likely	5/71
Parent involved in internet offending	0/71
Parent deemed to pose a risk to children in general	4/71
Parents subject to statutory supervision (Probation)	8/71
Parent has been resident in the UK for less than 5 years	5/71
Parent with a diagnosed learning disability or believed to have one	6/71

Housing issues including arrears	15/71
Non / poor school attendance	17/71
Child previously been subject of a CP Plan in Kingston	9/71
Child or sibling previously been subject of a CP Plan in another L.A.	3/71
Family have moved home / LA several times	6/71
Supportive extended family	14/71
Transfer in conference from another LA	2/71

### Key Trends in Child Protection Activity 01/04/10 – 31/3/11

- Over the last 3 years, child protection activity has continued to steadily increase although during the last 6 months the increasing trend seems to have turned and numbers appear to have stabilised. In the year ending March 2007, 48 children were subject of child protection plans. This number increased to 62 in the year ending March 2008 and 79 end of March 2009. At the end of March 2011, 91 children (from 52 families) were subject of cp plans.
- Nationally the number of children being made subject of a cp plan for the year ending March 2010 was 35.5 children per 10 000 population under 18, an increase on the 27.5 per 10000 in March 2008. Kingston's figure increased from 15 per 10 000 for the year ending March 2007 to 20 per 10 000 year ending 2008. At the end of March 2010 this figure had risen further to 32.5 per 10 000 population under 18, in keeping with national trends.
- More children with child protection plans means more review conferences taking place and therefore this number has continued to rise over the last few years from 79 (reviewing 119 children) in year ending 2008, to 133 (reviewing 255 children) year ending 2010. By the end of March 2011, 283 children had been reviewed at 154 review conferences.
- This huge increase has impacted upon the child protection service leading to a delay in the production of the written record of the conference. To try to address this, written records have been reduced in length. It is therefore imperative that all professionals invited to conferences submit a written report and those agencies that do not will be named as needing to do this in the child protection plan. As part of the Council's restructuring, funding for an additional 18 hour child protection administrator post has been agreed and a new team member has recently joined the child protection service.
- The numbers of unborn babies being made subject of a cp plan has remained stable over recent years and by the end of March 2011, 16 unborn babies had been considered at initial conferences and made subject of a cp plan. This is a significant 22.5% of all new cp plans made.
- There has been an increase in the number of very young parents and last year there were 7 mothers aged less than 21 years of age. At the end of March 2011 there were 8 families (11.2%) where the parent was aged 21 or under.

- Greater awareness of domestic abuse and better services continue to lead to increased numbers of families where domestic abuse as an issue is identified. Domestic abuse as a factor in children subject of initial conferences last year affected 55% of families. In the years ending 2008 and 2007, this figure was just under 50%. Many of the families affected by domestic violence are also affected by alcohol and housing and have unborn children. During this year, two thirds of the 71 families were affected by domestic abuse.
- Despite the large proportion of domestic abuse, only 9 families (13%) were protected either by an injunction, bail conditions, custody of however an expected outcome of the cp planning process that as the plan progresses, more families will be protected by an injunction etc.
- Historically in Kingston and nationally, 'neglect' has been the most frequently used category for some years although better identification of domestic abuse has occurred locally over the past 3 years, leading to greater numbers of children having a cp plan for 'emotional abuse'. Currently in Kingston there are slightly more children with a cp plan under the sole category of 'neglect' (47%) than 'emotional abuse' (42%) reflecting this improved identification of children affected by domestic abuse. Nationally 'neglect' at 43.5% continues to be easily the most frequently used category with 'emotional abuse' solely used in 27.9% of cp plans. This national use of the 2 categories reflects Kingston's position about 2-3 years ago. Locally 'sexual' and 'physical abuse' account for 7% & 2% each. Two children (from 1 family) received a cp plan under more than 1 category, ('neglect' and 'sexual').
- Drugs and / or alcohol misuse continue to affect a significant proportion of families considered at initial conferences. Last year about 59% of families considered at initial cp conferences were affected by a parent with substance misuse. However only 6.9% were receiving any treatment at the time of the initial conference, although an expected outcome would be for this figure to increase as the cp plan progressed. This year at end March 2011 the figure was 55%, with only 7% receiving any treatment.
- In the year ending March 2008 care proceedings were either underway or likely to occur in 12% of the families. At the end of last year this figure stood at 15.5%, in line with a national increase of public court proceedings following Baby Peter's death and the subsequent public enquiry. The figure for this year so far is 11% although further into the period of cp planning it is likely that there will be other families moving into the public law arena.
- A significant number of over 22% of families have had a child in their care removed through the courts or voluntarily placed with alternative carers. Last year this figure was 18%.
- Last year only 4 children (or 7%) had been previously subject of a cp plan compared to 6% in 2008. The figure for this year has increased and currently stands at nearly 13%, which includes a mobile family of 4 children. Nationally at the end of March 2010, 13.4% of children had previously been the subject of a cp plan.
- Last year just one of the children who ceased to be subject of a plan had been the subject of a plan for over 2 years. This year this figure stands at 6 children from 4 families, which is 6.5%. Nationally

this figure at the end of March 2010 was 5.9%. The Team Leader of the Child Protection Service monitors children as they go into their second year subject of a cp plan and reports to senior children's social care managers on a quarterly basis.

- Usually there are slightly more boys than girls who are subject of a cp plans and this is reflected in national figures. However this year at the end of March 2011 there were 45 girls, 43 boys and 3 unborn babies.
- This year four of the adult carers were considered to be a 'Risk to Children'. The child protection process identifies these individuals and ensures that they are flagged on the Social Care data base.
- There were 7 children with a disability considered at the 71 initial cp conferences this year, although only one child was open at that stage to the Disabled Children Team. Last year only 2 children with a disability were considered at all 58 initial conferences.
- Housing issues (risk of eviction, arrears, overcrowding, eligible for bidding etc) at 21% continue to account for a significant proportion of families.
- The other significant but broadly consistent factor this half year is that 38% of the families considered at initial conferences were headed by a single parent. This is a slight reduction on last year's figure of about 50%.
- **This year 3 new significant issues have been tracked:**
  1. Families who move frequently account for 6 (8.5%) of the 71 families.
  2. There have been 2 initial cp conferences as a result of transfers from other Local Authorities.
  3. For 14 of the 71 families (20%) there is the presence of an extended supportive family, which is often the most essential protective factor and a key reason for progress with the cp plan being made.

## Multiple Categories of Significant Need at the 9 ICPCs from 01/04/11 – 31/5/11

ICPCs and key issues	DV	Substance Misuse	Mental Health	Violent offender	No supportive extended family	AWLD	Housing issues	Single parent	Previous children removed or not in their care	Large family (4 plus children)	Parent aged 21 or less	Parent was in care and / or had a cp plan	Parent likely to be prosecuted	Several moves
1.	√	√			√		√							
2.*					√								√	√
3.					√		√						√	√
4.	√	√	√				√	√			√		√	
5.	√	√		√				√						
6.	√	√	√				√	√	√		√	√		
7.**														
8.	√	√	√											
9.		√	√		√			√						√

\*Conference 2: Stepmother beat child with a flex causing serious injuries for which she is likely to be prosecuted.

\*\*Conference 7: Internet offender who has now moved out of the family home.

### Other new issues to track from 1/4/11;

- Of the 9 ICPCs, 4 were single parents living in Tolworth & Hook Rise Ward, Surbiton Hill Ward, St Marks Ward and St James Ward.
- 2 new applications for care orders issued. One child also has a cp plan. Outcome of both applications was that no orders were made.
- Take up of children's centre activities by children with cp plans:

